

CONSTRUCTION ZONE

Clover Park School District

November 2016

Construction Zone is a monthly update on the progress of voter-approved school construction projects and school construction projects on Joint Base Lewis-McChord. Updates are also posted on the district's school construction website at <http://cloverpark.k12.wa.us/construction/default>.

Facilities Advisory Committee

The next meeting of the district's Facilities Advisory Committee (FAC) is Wednesday, Nov. 16. Meeting minutes from the Oct. 12 meeting will be posted on the district website under Announcements and Facilities Advisory Committee Updates.

2015 JBLM SCHOOL CONSTRUCTION PROJECT

Evergreen Elementary School

Project Review	SIZE 99,886 SF	CAPACITY 761 Students	BUDGET \$39.4 Million	ARCHITECT BCRA	CONTRACTOR Skanska
----------------	-------------------	--------------------------	--------------------------	-------------------	-----------------------

The new Evergreen Elementary School project is expected to reach substantial completion in early November, which means the contractor has completed work to the point that the district can begin moving in furniture and other items. Any remaining work is minimal finish work. The contractor is beginning to remove job trailers from the site and completing final landscaping details. New furniture is being installed throughout the building as the contractor completes final finish details and punch list activities. After winter break, students and staff are scheduled to return to the new school when school resumes in January 2017.



Classroom cabinets have been installed at Evergreen Elementary.

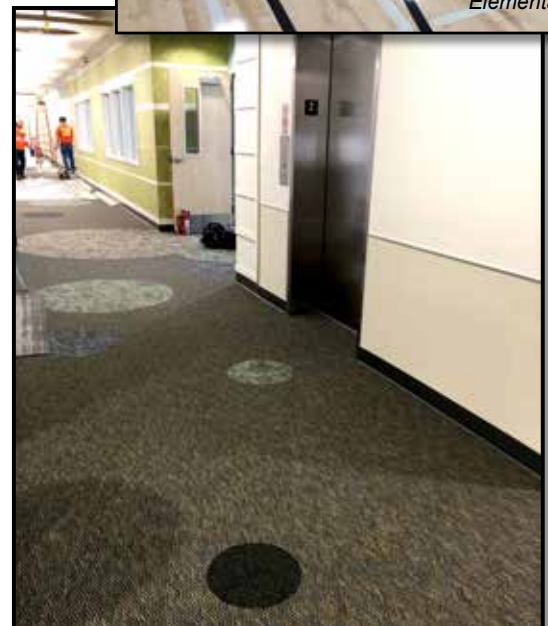
The gym is ready for students at Evergreen Elementary.



A view of the entrance to the administration office at Evergreen Elementary School.



The administration area is nearing completion at Evergreen Elementary School.



A view of the hallway carpets and elevator at Evergreen Elementary School.